

Spiserstrasse 4 Townhouse 4a. 1

3.5-Zimmer-Townhouse

Erdgeschoss – 2. Obergeschoss

Fläche: 107.90 m²

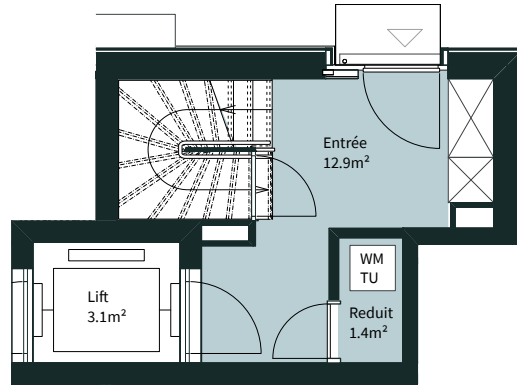
Loggia + Dachgarten: 46.50 m²

Beratung und Vermietung

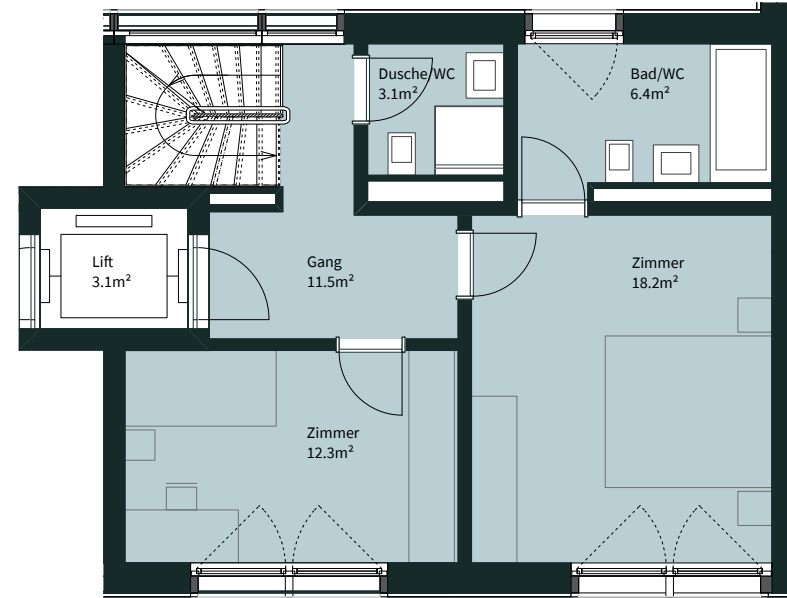


vermietung@yards.zuerich

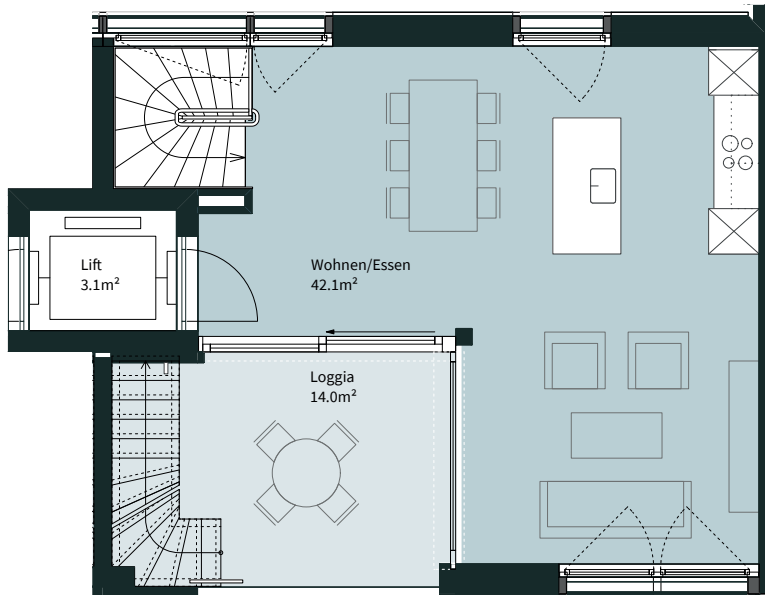
Ebene 0



Ebene 1



Ebene 2



Ebene 3

